

# Data Connection with Beam Iridium Docking Station or Terminal with Direct Internet 4.0

---

HOW TO INSTALL A BEAM IRIDIUM DOCKING STATION/TERMINAL AS A MODEM (WINDOWS 7, 8.1 AND 10)

# How to Install a Beam Iridium Docking Station/Terminal as a Modem

---

## Contents

1. Install Software Management Tool (Eagle, SDMS, PDMS, BMS)
2. Install Direct Internet 4.0 (If Direct Internet 3 is present, uninstall before proceeding)
3. Connect Beam Iridium Docking Station/Terminal to a windows computer
4. Install Beam Iridium Docking Station/Terminal as a Modem
5. Create a Dial Up Connection for Direct Internet 4.0
6. How to start Direct Internet 4.0 on the computer
7. Troubleshooting

# Step 1. Install the Beam Iridium Docking Station/Terminal Software Management Tool

---

Please visit the [www.Beamcommunications.com](http://www.Beamcommunications.com) website product support page to download the tool.

Make sure the software management tool can connect to the unit before continuing to Step 2.

## Step 2. Install Direct Internet 4.0

---

This step installs the Steelhead Mobile Client which replaces the earlier Web Accelerator of Direct Internet 3.

If Direct Internet 3 is present, uninstall before proceeding. Restart computer.

Download the new Direct internet 4 [here](#).

## **Step 3. Install Beam Iridium Docking Station/Terminal as a modem.**

---

After Direct Internet and the Iridium handset has been installed as a modem; proceed in installing the docking station as a modem.

This step enables the user to use the Beam Iridium terminal or docking station as a data modem.

### Connection Tips:

Beam Iridium Docking Stations – Physically connect to USB Port at the bottom of the dock. In Control Panels connect to the USB Data Port (Not the Application Port).

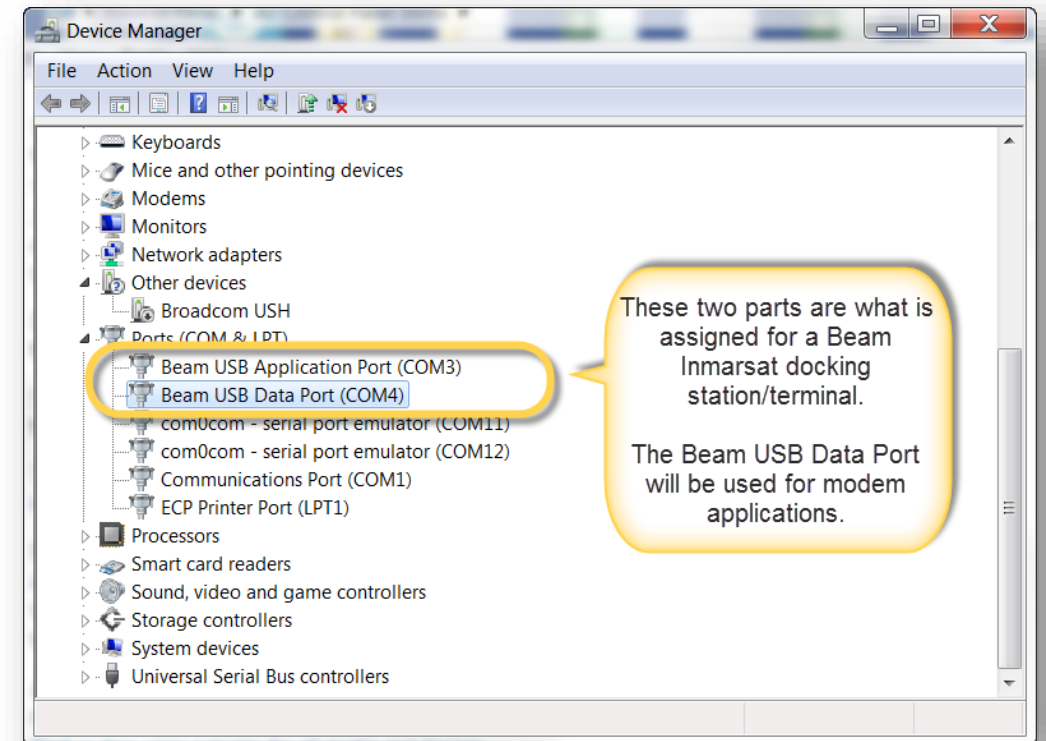
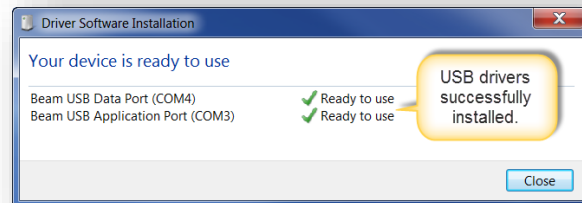
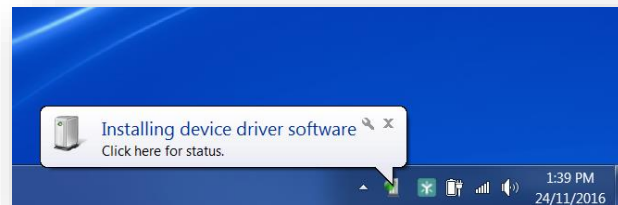
RST100 – Physically connect to Com Port (not the Log Port) at the back of the terminal. Windows Control Panel will only show one connection, either a Serial Com Port if using a serial to serial cable or a Serial to USB cable.

# Step 3. Connect Beam Iridium Docking Station/Terminal to a windows computer

After the Software Management tool is installed, connect the Beam Iridium docking station/terminal to the computer using a USB cable.

Make sure the docking station/terminal is switched on.

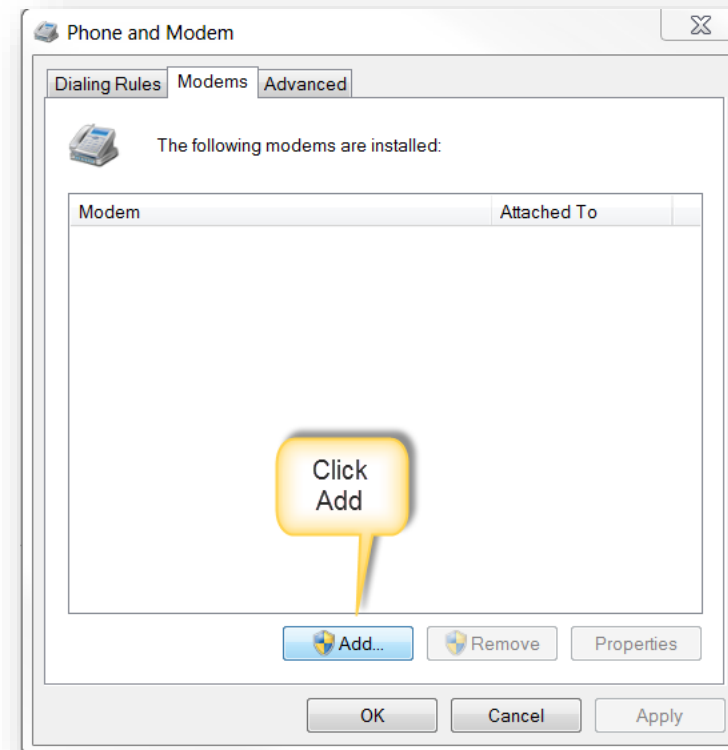
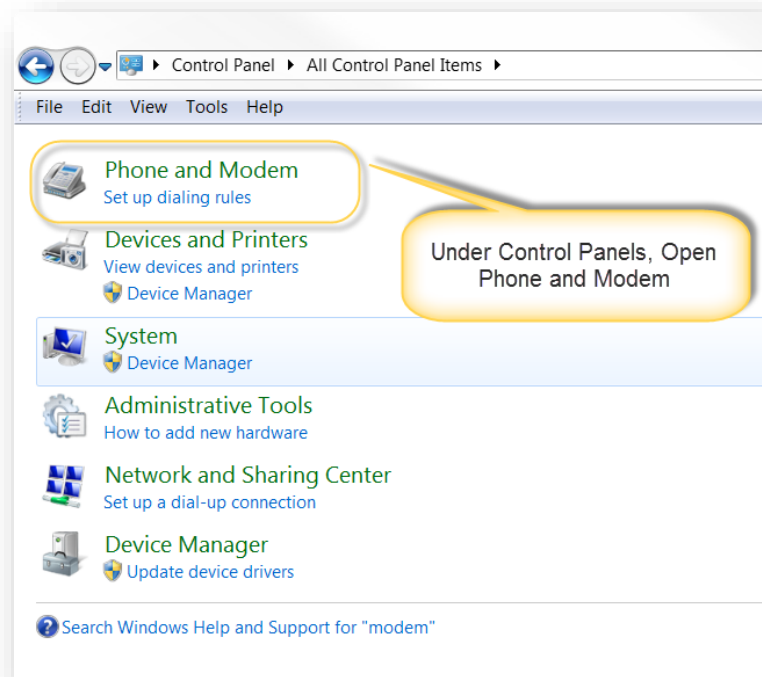
The first time the docking station/terminal is connected to the computer, USB drivers will be installed.



# Step 3. Install Beam Iridium Docking Station/Terminal as a modem.

Go to Control Panel > Phone and Modem

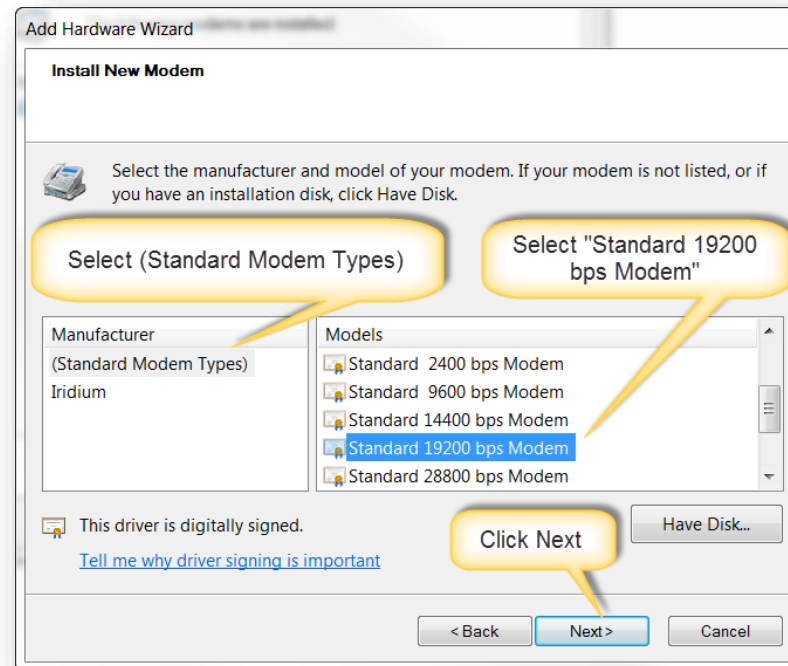
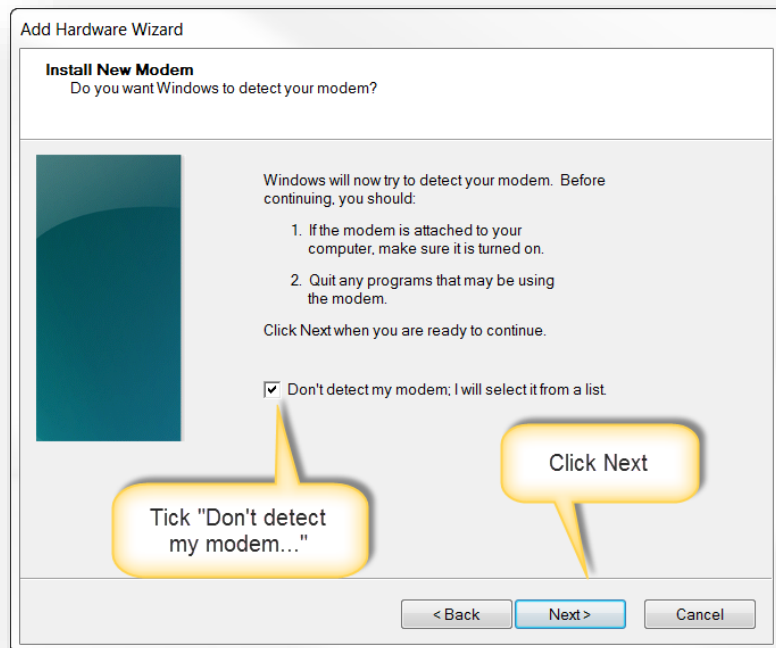
Under the Modems tab, Click Add.



# Step 3. Install Beam Iridium Docking Station/Terminal as a modem.

Tick “Don’t detect my modem...” and click Next.

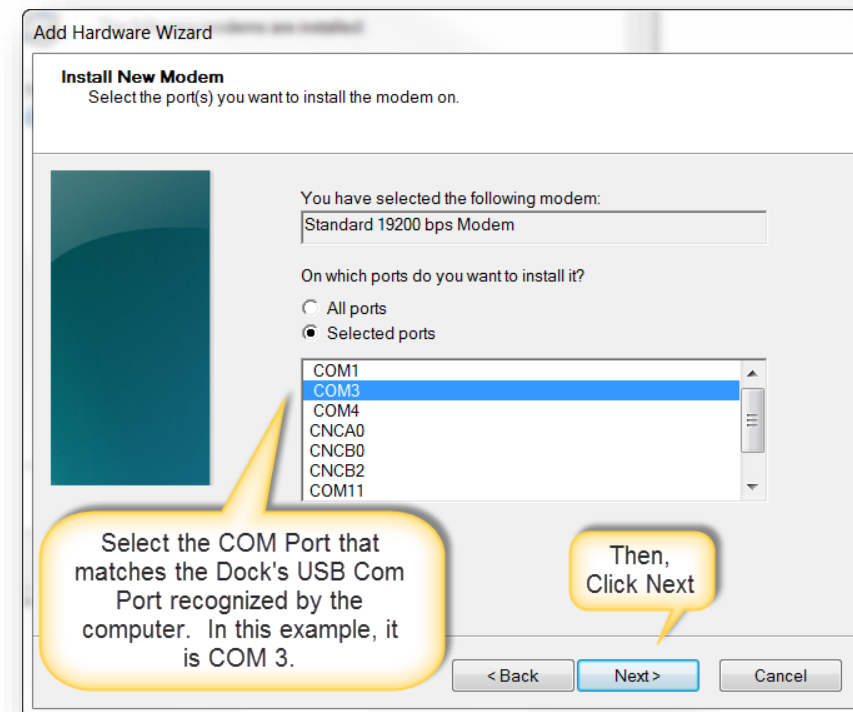
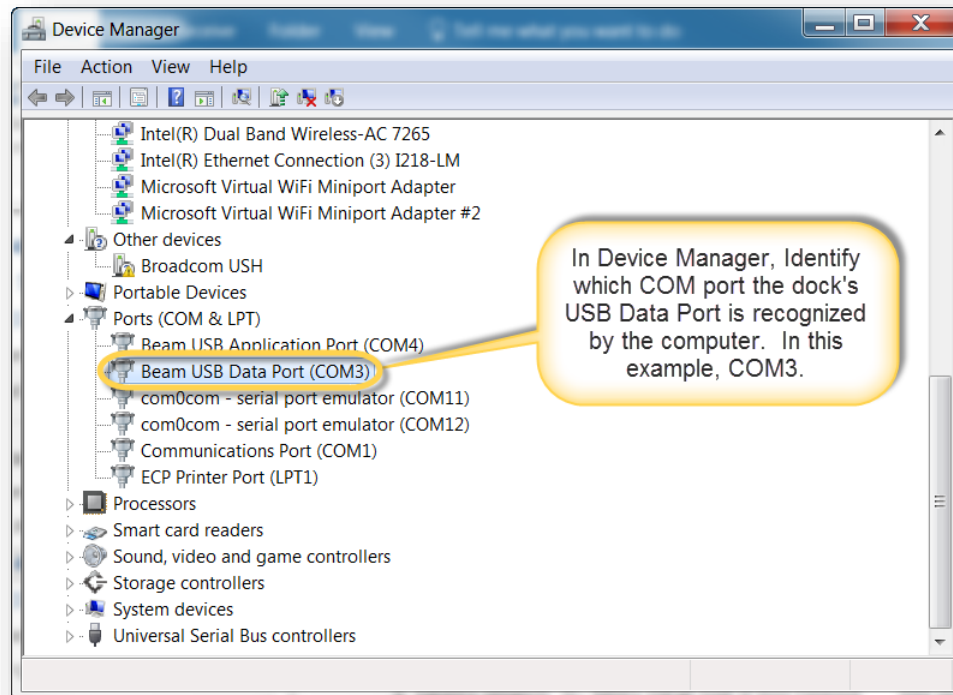
Under Manufacturer, select “Standard Modem Types” and under Models, select “Standard 19200 bps Modem.” Then Click Next.



## Step 3. Install Beam Iridium Docking Station/Terminal as a modem.

Before assigning the COM Port, verify in Device Manager which COM Port the docking station or terminal's USB Data Port is connected to. For this example, it is COM3.

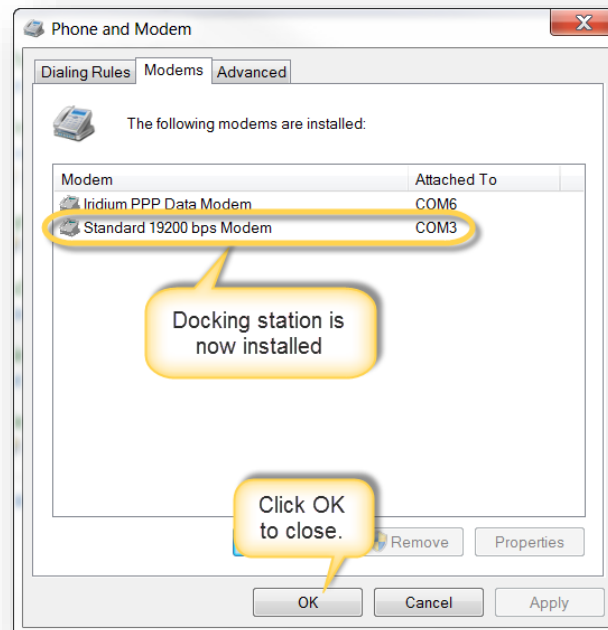
Back to process, select COM 3. Then click Next.



## Step 3. Install Beam Iridium Docking Station/Terminal as a modem.

Confirm that the Standard 19200 bps Modem now appears under the Modems tab attached to the correct COM Port.

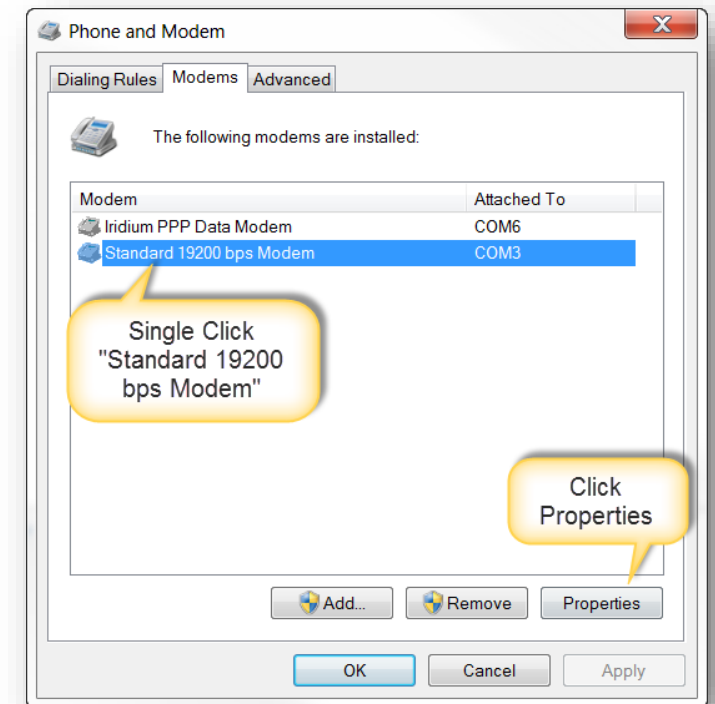
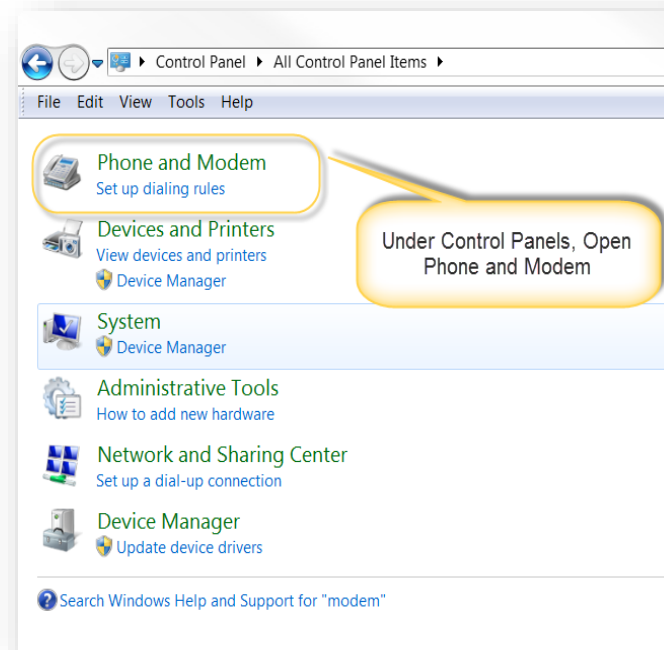
Early generation of Beam Iridium docking stations like the SatDock G require additional configuration to work as a data modem. Follow instructions on the next page on how to add the additional configuration settings.



## Step 3. Install Beam Iridium Docking Station/Terminal as a modem.

To add the additional code for early generation Beam Iridium docking station:

- Under Control Panel, open Phone and Modem.
- Under the Modems tab, select the “Standard 19200 bps Modem” then click “Properties.”

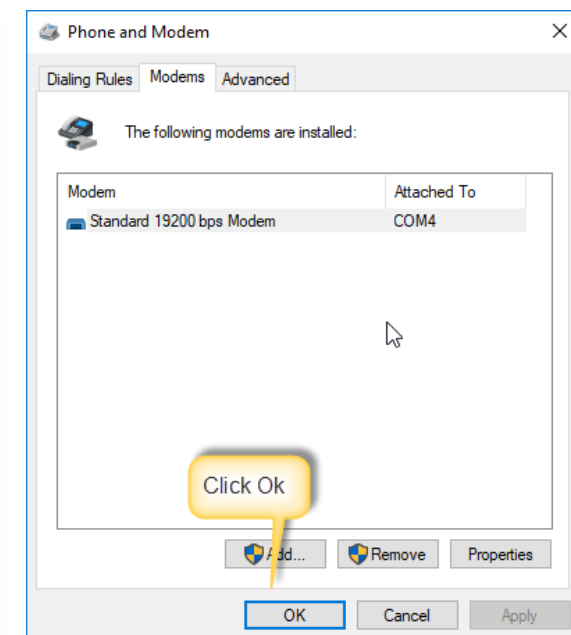
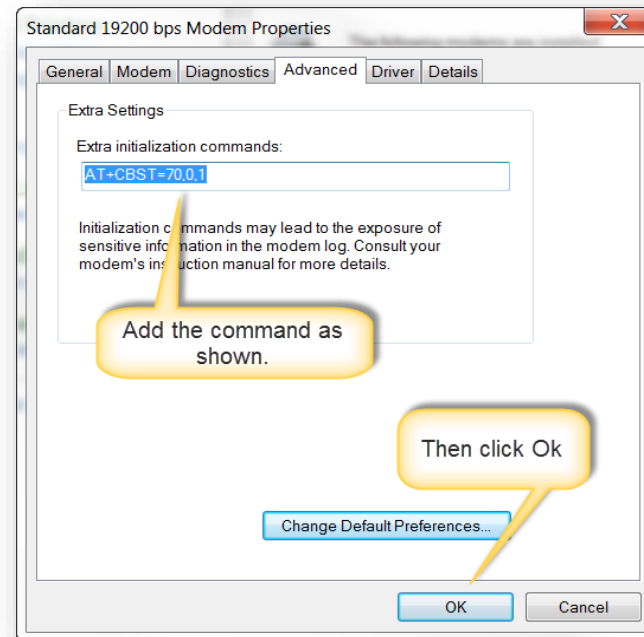
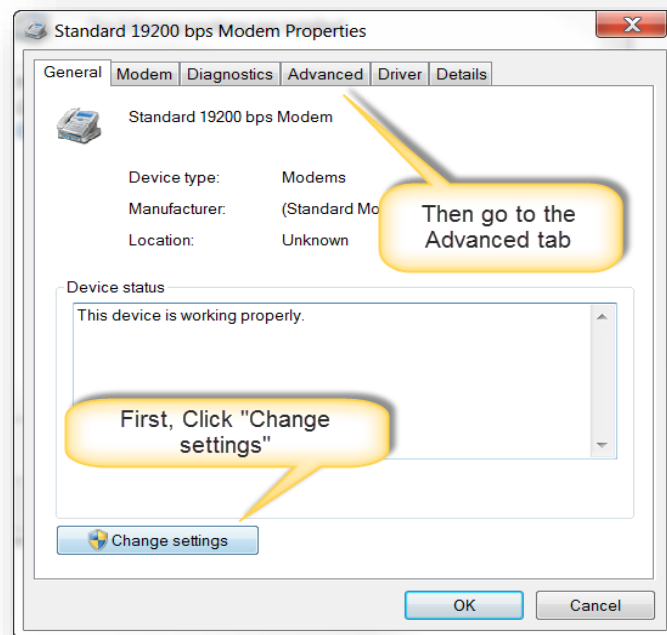


# Step 3. Install Beam Iridium Docking Station/Terminal as a modem.

Under the General tab, click “Change settings.”

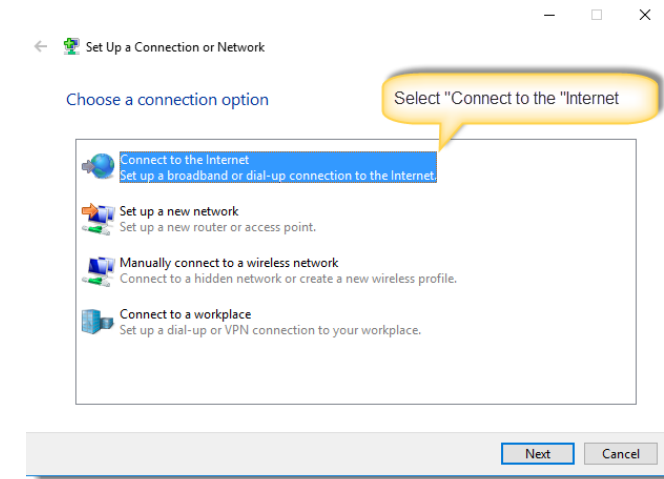
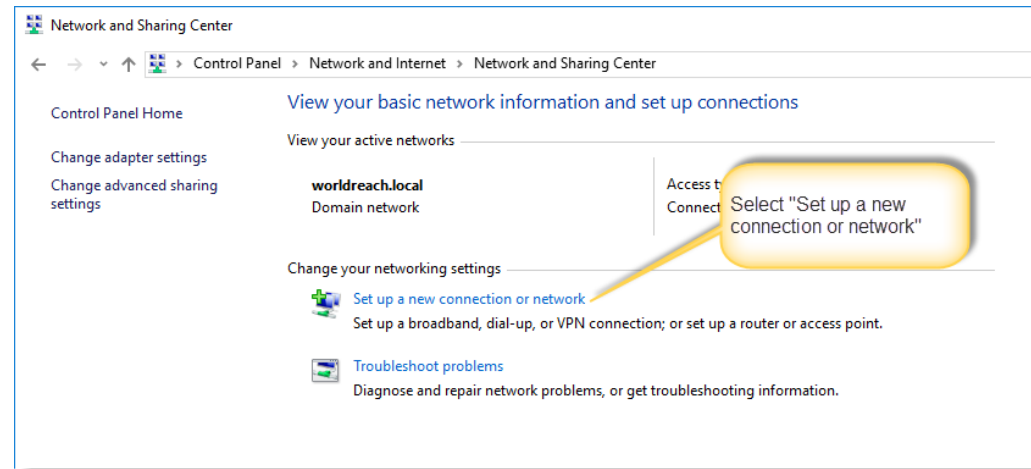
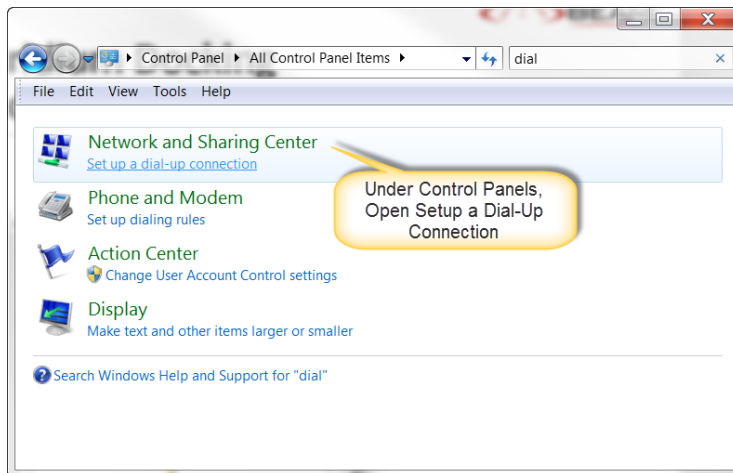
Under the Advanced tab, add the Extra initialization commands: AT+CBST=70,0,1

Then click “OK.”



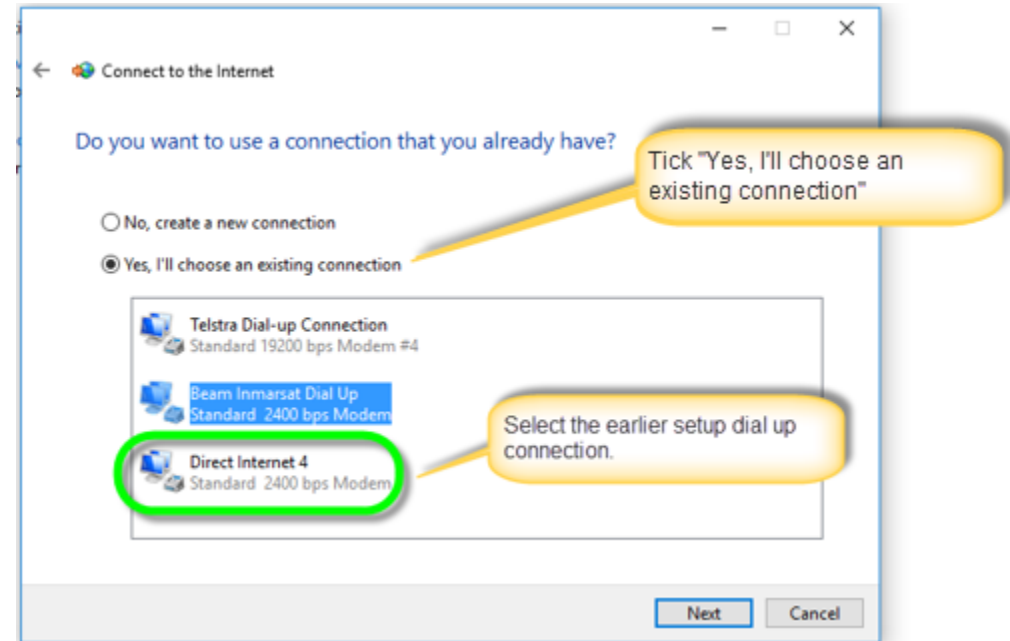
# Step 4. Create a Dial up Connection for Direct Internet 4.0 (Applicable to Windows 7 8.1 and W10)

In Control Panels, Open Setup a Dial-Up Connection. A new window appears, select “Connect to the Internet”



# Step 4. Create a Dial up Connection

Follow instructions as shown in the screenshots below.

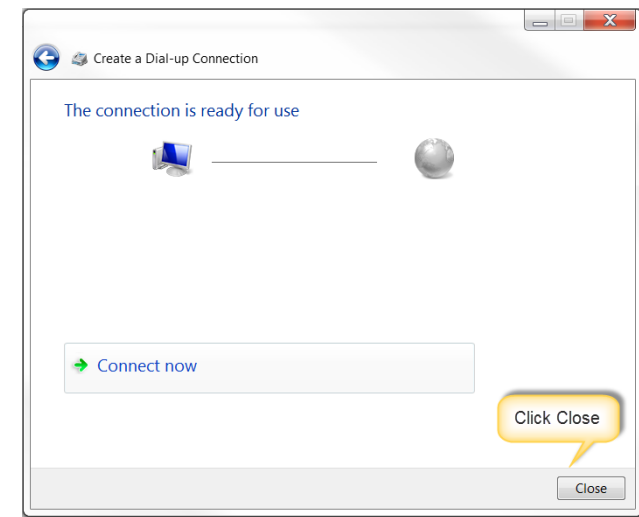
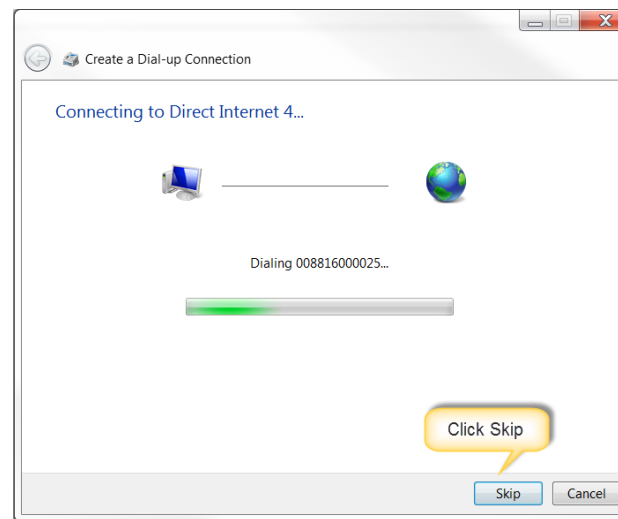
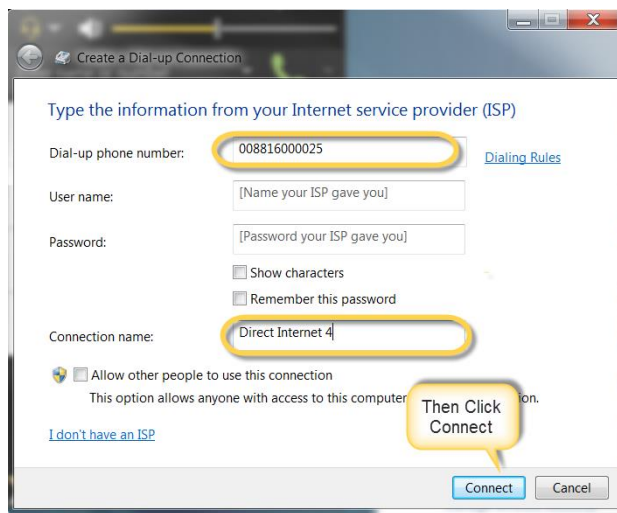


# Step 4. Create a Dial up Connection for Direct Internet 4.0

Enter the dial up phone number, 008816000025 for Iridium and 66666 for Telstra.

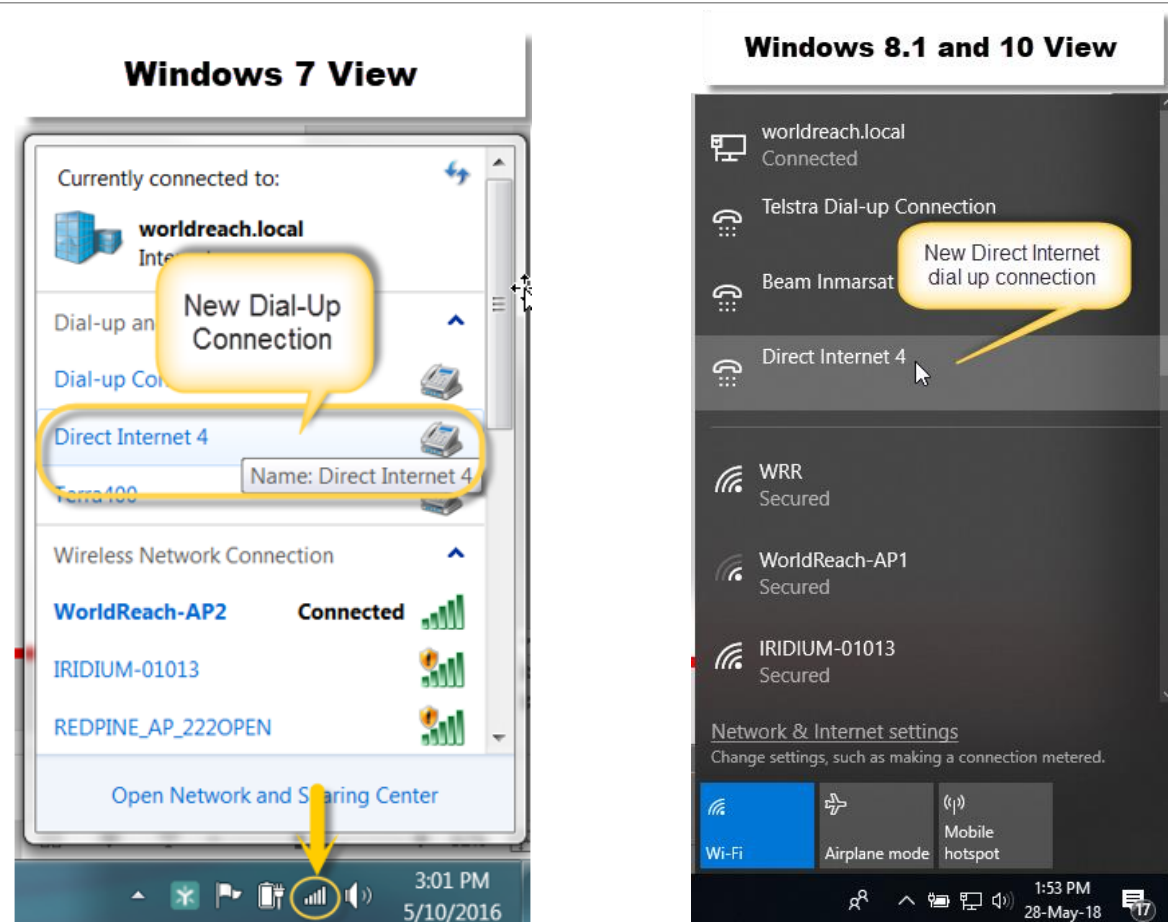
Assign a Connection name as shown in the screenshot. Then click Connect.

The next window will automatically establish the connection. This time, click Skip and we'll establish Direct Internet 4 connection later.



# Step 4. Create a Dial up Connection for Direct Internet 4.0

At this stage, a new dial up connection is available under Network Connections.



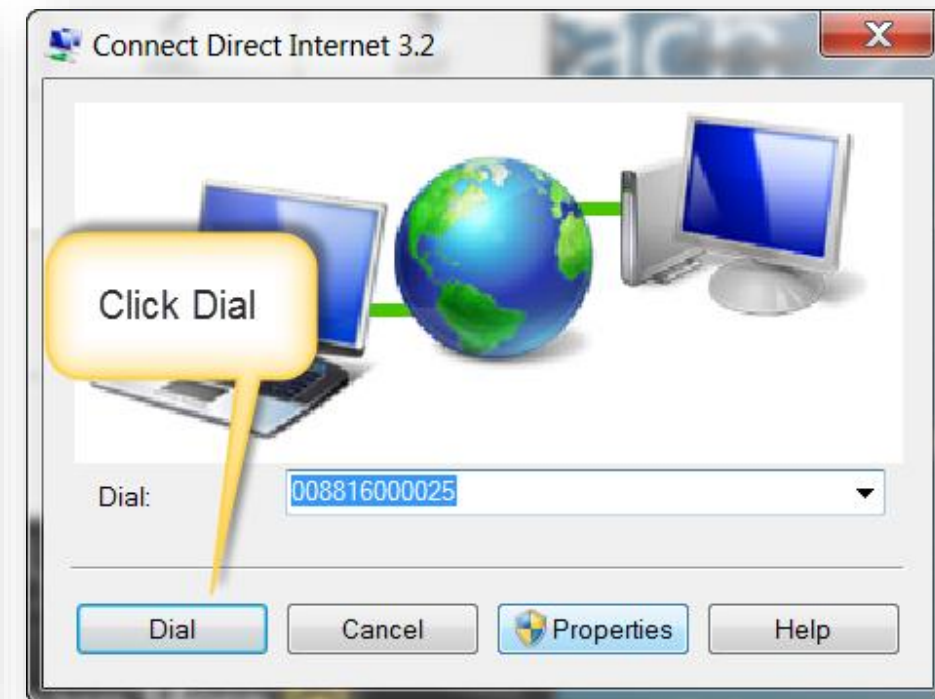
## Step 5. Connect to the Internet via the Beam Iridium Docking station: (Applicable to Windows XP and 7 Only)

On your computer's system tray, click the network connections icon as shown in the screenshot.

Then, click "Direct Internet x.x"

Then Click Connect.

A new window will appear, Click Dial.



*Note: May show Direct Internet 3.2 But this is still applicable to Direct*

*Internet 4.0*

# Step 5. Connect to the Internet via the Beam Iridium Docking station: (Applicable to Windows 8.1 and 10 Only)

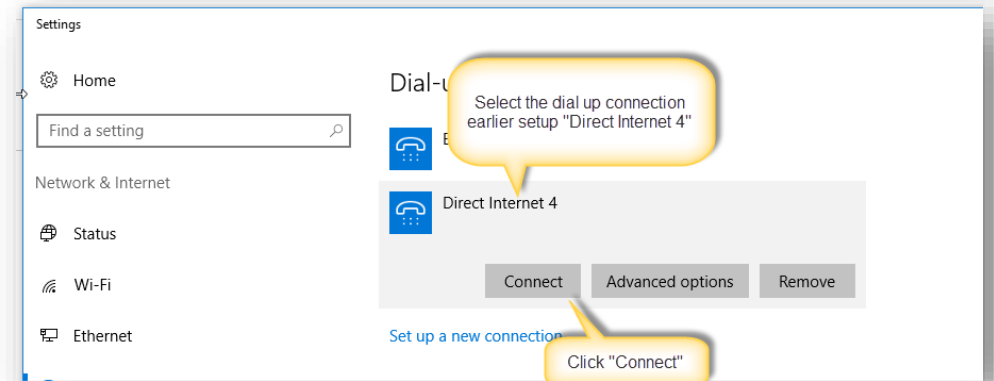
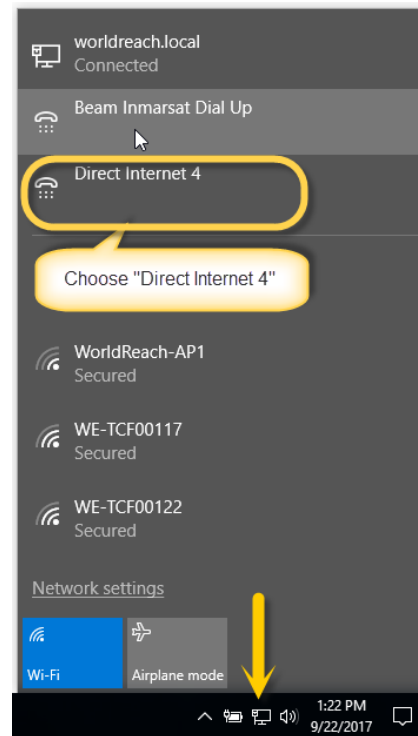
On your computer's system tray, click the network connections icon as shown in the screenshot.

Then, click "Direct Internet 4"

Then Click Connect.

A new window will appear,

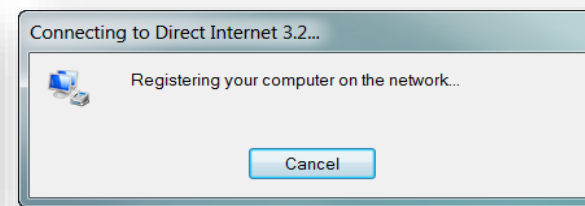
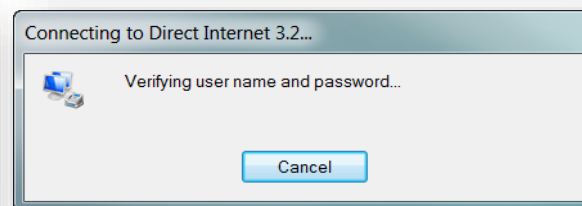
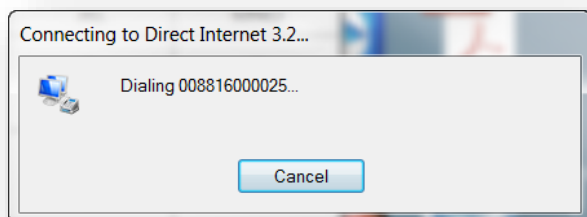
Click Connect.



## Step 6. To Connect to the Internet via the Beam Iridium Docking station:

A successful connection will follow the following message prompts.

For this example, the handset will show data call in progress.



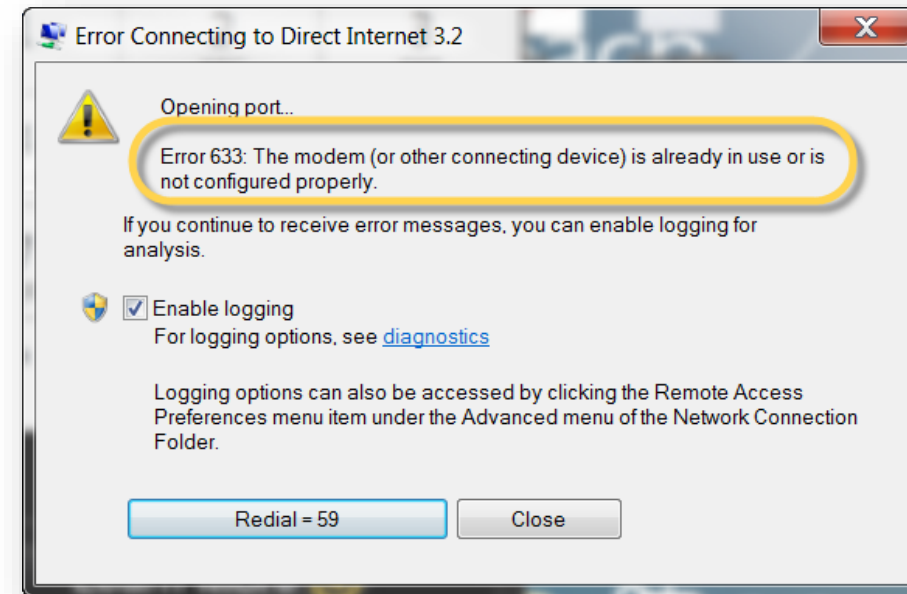
*Note: May show Direct Internet 3.2 But this is still applicable to Direct Internet 4.0*



## Step 5. Troubleshooting

---

Error 633: This occurs when the modem connected is different from the modem selected, or the dock is not connected to the computer via USB.



*Note: May show Direct Internet 3.2 But this is still applicable to Direct Internet 4.0*

## Step 5. Troubleshooting

How to fix Error 633.

- On your computer's system tray, click the network connections icon as shown in the screenshot.
- Then, click "Direct Internet x.x"
- Then Click Connect.
- A new window will appear, click Properties.



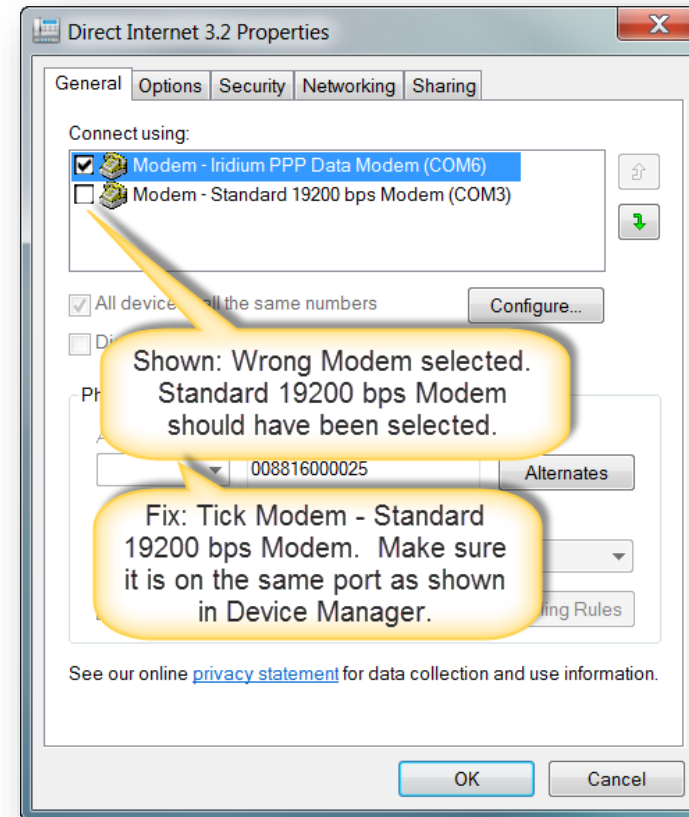
Note: May show Direct Internet 3.2 But this is still applicable to Direct

Internet 4.0

## Step 5. Troubleshooting

How to fix Error 633.

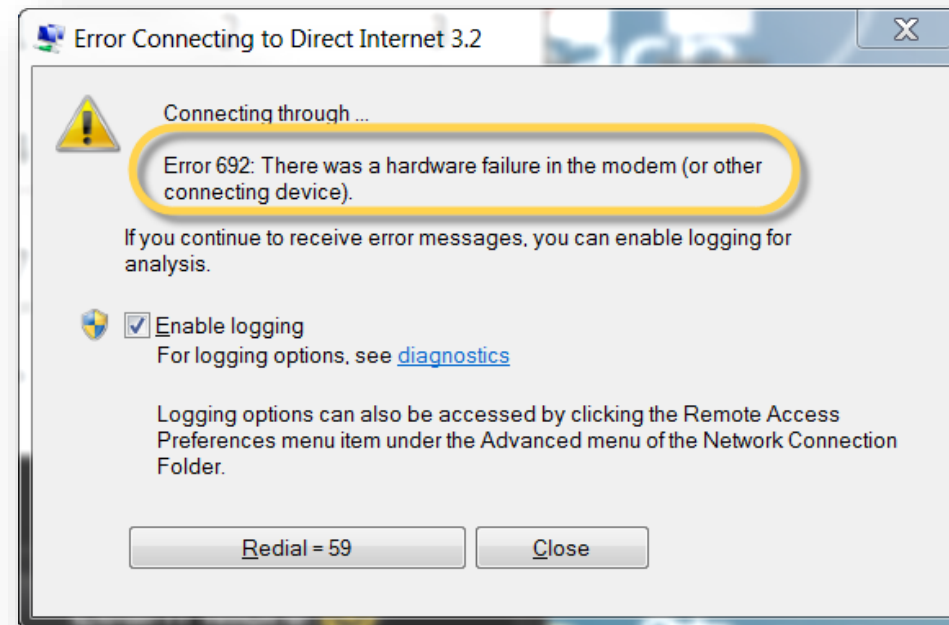
- Under the General tab, make sure that the correct modem is selected. In this example, the wrong modem was selected thus the dialler cannot find the hardware thus returning a hardware error.



Note: May show Direct Internet 3.2 But this is still applicable to Direct Internet 4.0

## Step 5. Troubleshooting

Error 692: This error occurs when the Beam Iridium docking station was installed as an Iridium PPP Modem.



Note: May show Direct Internet 3.2 But this is still applicable to Direct

Internet 4.0

## Step 5. Troubleshooting

How to fix Error 692.

- On your computer's system tray, click the network connections icon as shown in the screenshot.
- Then, click "Direct Internet x.x"
- Then Click Connect.
- A new window will appear, click Properties.

Note: May show Direct Internet 3.2 But this is still applicable to Direct

Internet 4.0



## Step 5. Troubleshooting

Under the General tab, this example shows that the docking station's USB com port was installed as an Iridium PPP Modem.

It should be installed as a Standard 19200 bps Modem similar to the green ticked modem. This now creates a com port conflict and will produce port issues. Click Ok to close the window.

Delete the installed modem as shown in the screenshot. Then a **Restart** of the computer is required to reset the Com Port.

Then, to install the modem correctly, follow Step 3 in this document.

**Note:** May show Direct Internet 3.2 But this is still applicable to Direct Internet 4.0

